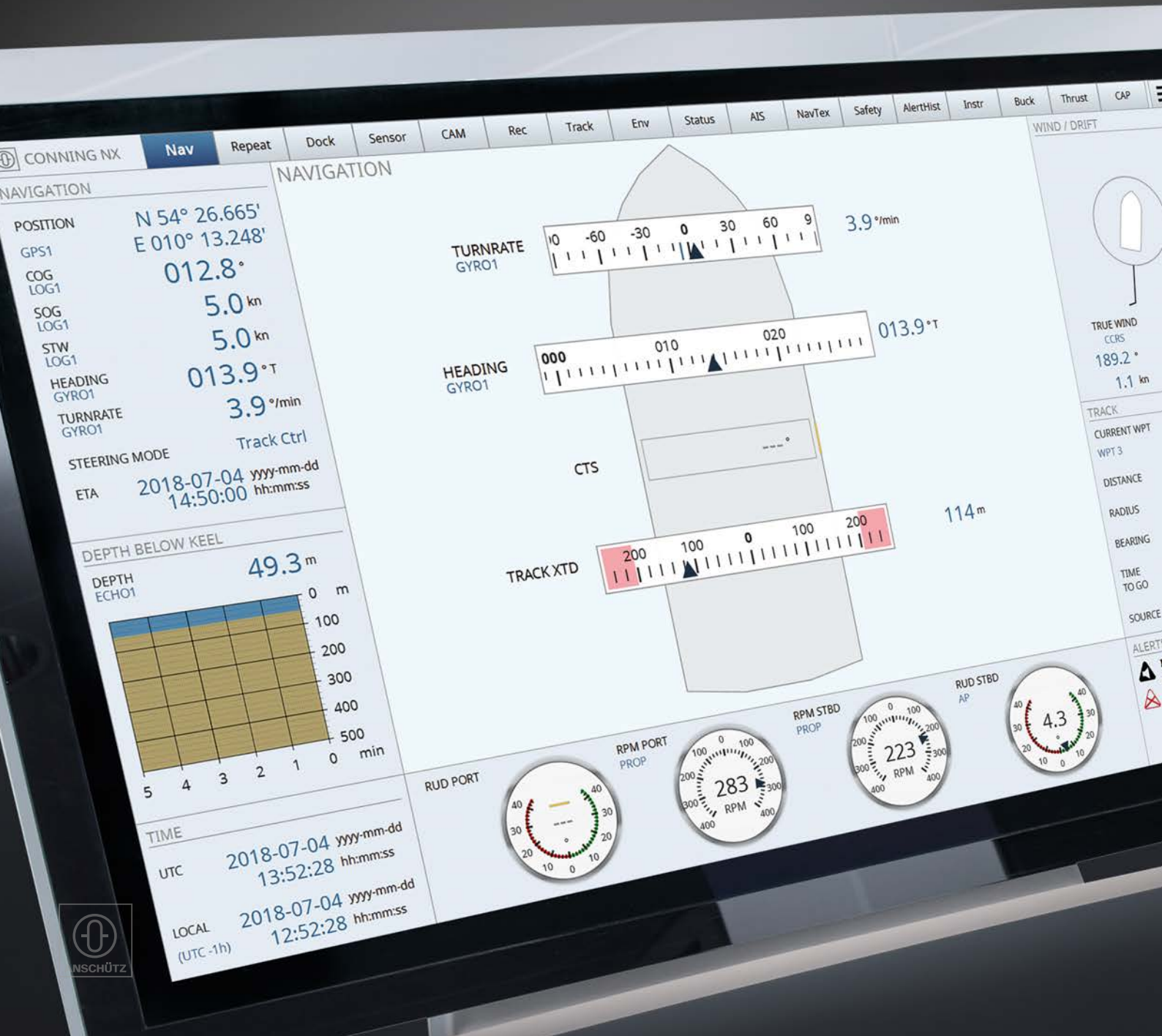


Conning NX

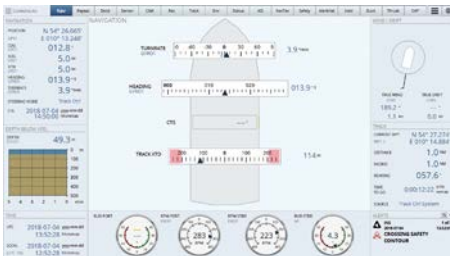


Conning NX

Conning NX is a centralized navigation data display for the ship's command. On pre-defined pages, Conning NX presents bridge navigation and machine status data conveniently at a glance. The combination of different instruments and indications at a central display increases situational awareness, even in critical situations of maneuvering and docking.

Main Features

- Standard pages for various vessel types
- Different pre-configured pages for different maneuvering situations (e.g. navigation, steering performance, docking, track)
- Graphics are individually adapted to the specific type of equipment
- Not only a display: Conning allows operation of various functions provided e.g. with an integrated navigation system (e.g. CCRS sensor selection, CAM centralized alert presentation)
- Approved to latest IMO standard for bridge alert management (MSC.302(87))



Learn more



Docking Display
Visit the website
www.raytheon-anschuetz.com/conning-nx/docking-display



Conning NX on 12\"/>